



Fig. 3.1. Fiches à gond



Fig. 3.2. Fiches à gond

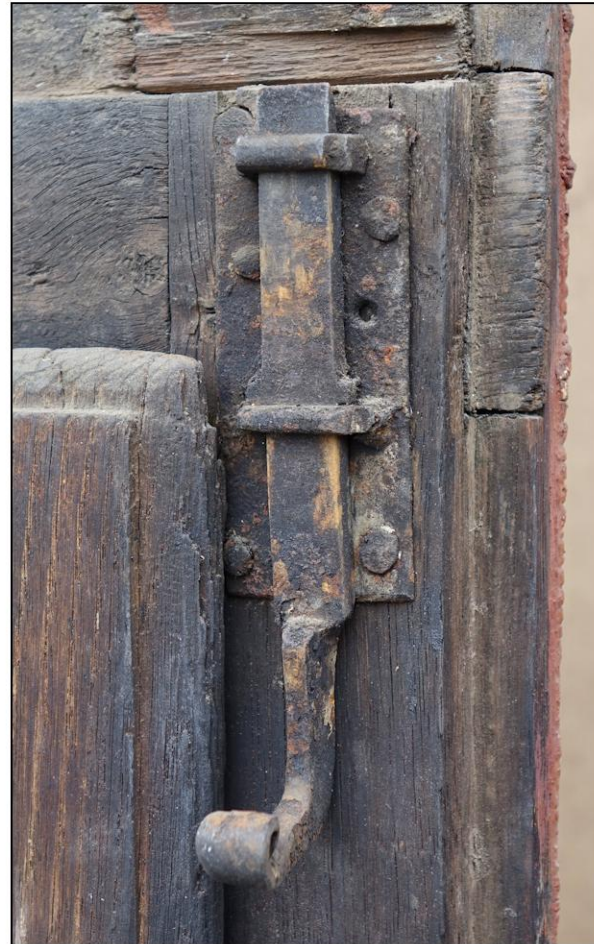


Fig. 3.3. Verrou supérieur

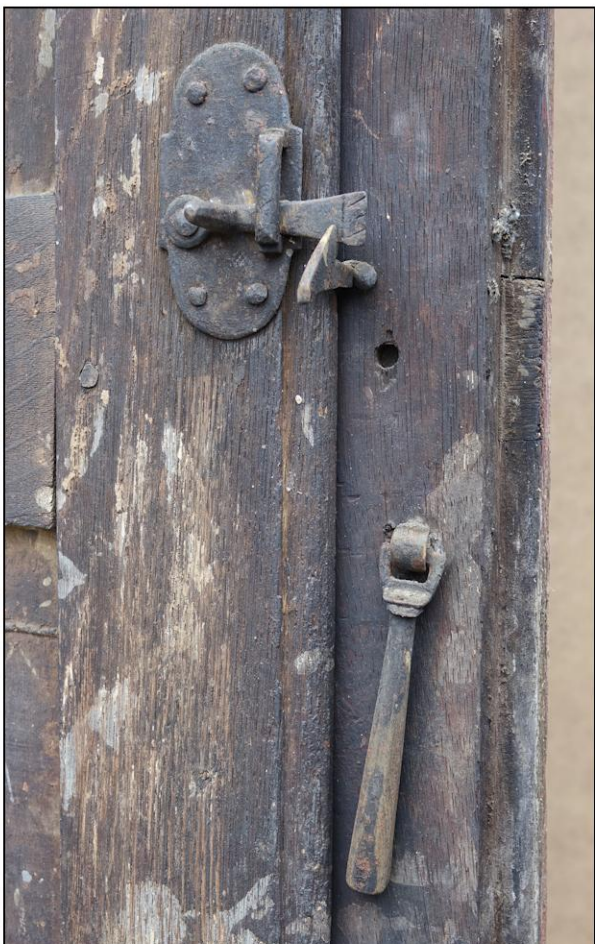


Fig. 3.4. Loquet et pendeloque

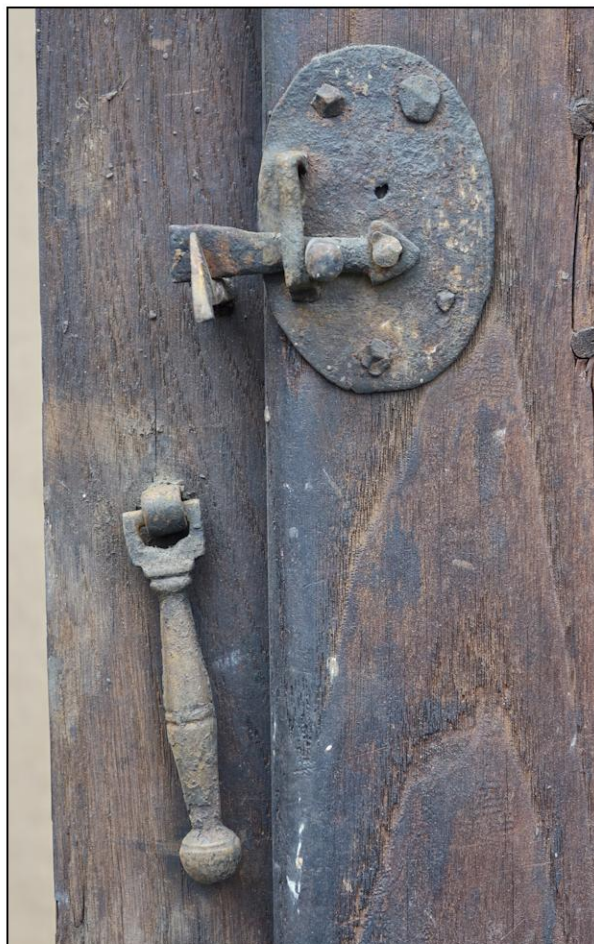


Fig. 3.5. Loquet et pendeloque

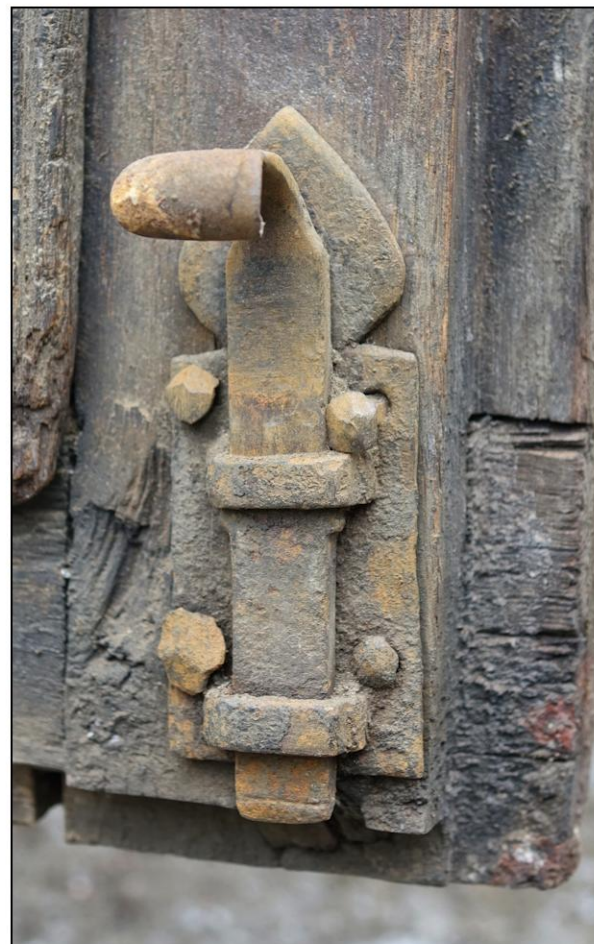


Fig. 3.6. Verrou inférieur



Fig. 3.7. Loquet

RENNES (Ille-et-Vilaine)		
Ancien hôtel de Tizé		
Planche n°3 - Serrurerie		
A. TIERCELIN	2020	Etude n°35014